

GHANA STATISTICAL SERVICE (GSS)

Statistical Bulletin

CONSUMER PRICE INDEX (CPI)

AUGUST 2025

New Series (2021=100)

For technical enquiries contact:

Ghana Statistical Service (GSS), Head Office
Economic Statistics Division
Tel No: +233-302-664382
Email:
econsstats@statsghana.gov.gh

Date: September 3, 2025

Consumer Price Index (CPI) for AUGUST 2025

CONTENTS	2
Highlights for August 2025	3
Table 1: Consumer Price Index, August 2025	5
Table 2: Food and non-food inflation, August 2025	6
Table 3: Non-Food Inflation by COICOP* major groups, August 2025	7
Table 4: Inflation by COICOP divisions	8
Table 5: Food Inflation by subgroups, August 2025	8
Table 6: Regional CPI and change rates, August 2025	10
Table 7: Inflation for imported and locally produced items	12
Table 8: Core inflation	13
Table 9: Inflation for goods and services	14

Note:

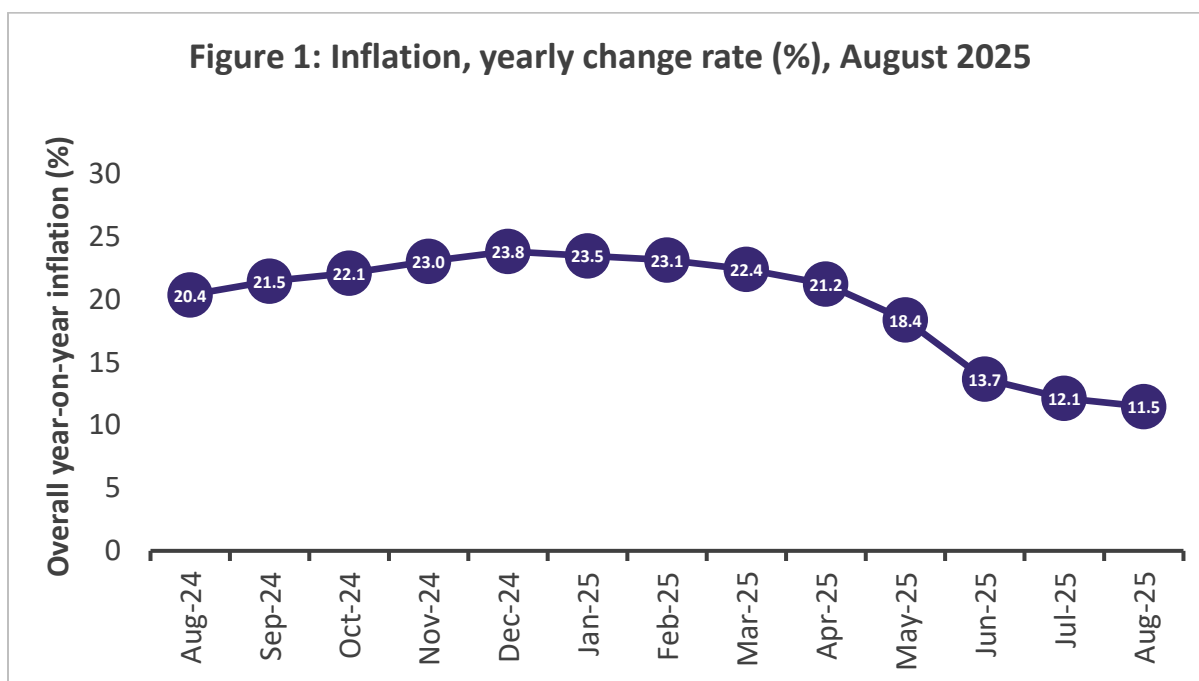
More detailed time series data are contained in the CPI User's guide on the GSS website
(www.statsghana.gov.gh)

HIGHLIGHTS AUGUST 2025

Inflation rate for August 2025 is 11.5%

The Combined Consumer Price Index (CPI) measures the change over time in the general price level of goods and services that households acquire for the purpose of consumption, with reference to the price level in 2021, the base year, which has an index of 100.

The year-on-year inflation rate as measured by the CPI was **11.5** percent in August 2025 (Figure 1). This rate of inflation for August 2025 is the percentage change in the Consumer Price Index (CPI) over the twelve-month period, from August 2024 to August 2025. The monthly change rate for August 2025 is **-1.3** percent (Figure 3).



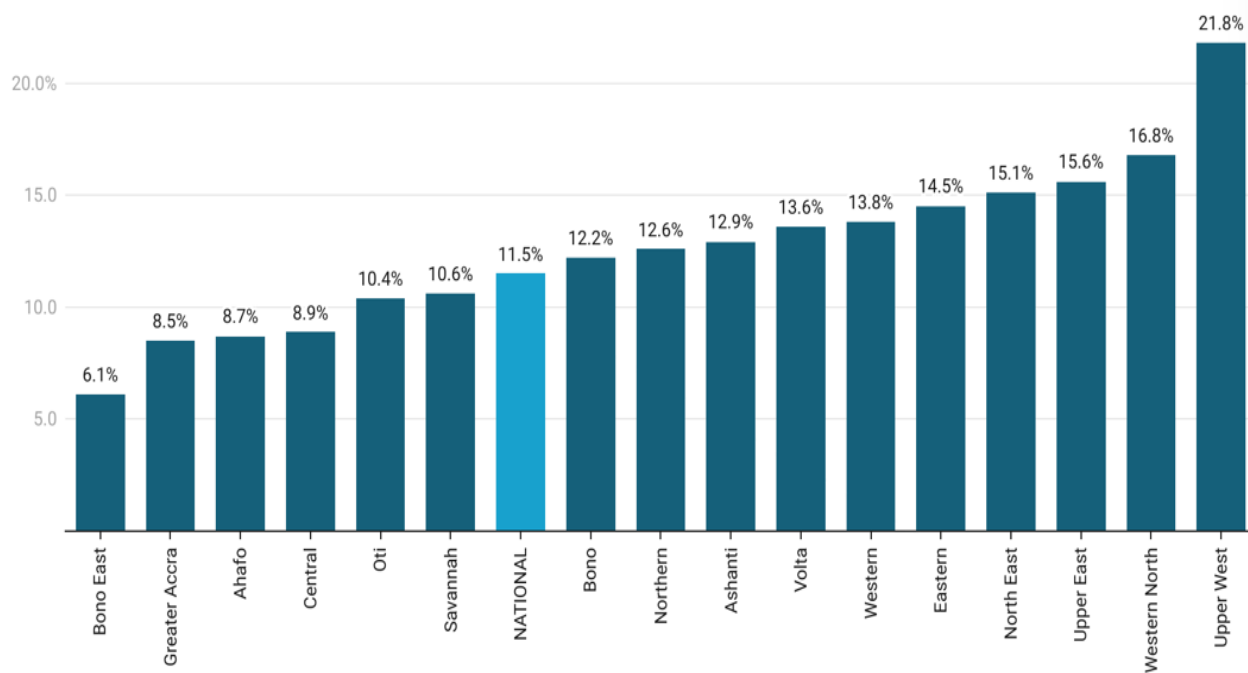
Food and Non-food inflation for August 2025

The Food and non-alcoholic beverages inflation rate recorded a year-on-year inflation rate of **14.8** percent in August 2025 (see table 2). The Non-food group recorded a year-on-year inflation rate of **8.7** percent in August 2025.

Regional Differentials

At the regional level, the year-on-year inflation rate ranged from **6.1** percent in the Bono East Region to **21.8** percent in the Upper West Region. Ten regions recorded an inflation rate above the national average of **11.5** percent.

Figure 2: Year-on-year inflation, August 2025



Source: Ghana Statistical Service

Table 1: Consumer Price Index, August 2025

Year / Month	Index 2021 = 100	Change rate (%)	
		Monthly (m/m)	Yearly(y/y)
Jan-23	165.6	1.7	53.6
Feb-23	168.7	1.9	52.8
Mar-23	166.6	-1.2	45.0
Apr-23	170.5	2.4	41.2
May-23	178.7	4.8	42.2
Jun-23	184.4	3.2	42.5
Jul-23	191.0	3.6	43.1
Aug-23	190.6	-0.2	40.1
Sep-23	194.1	1.9	38.1
Oct-23	195.2	0.6	35.2
Nov-23	198.2	1.5	26.4
Dec-23	200.5	1.2	23.2
Jan-24	204.5	2.0	23.5
Feb-24	207.8	1.6	23.2
Mar-24	209.5	0.8	25.8
Apr-24	213.3	1.8	25.0
May-24	220.0	3.2	23.1
Jun-24	226.4	2.9	22.8
Jul-24	231.0	2.1	20.9
Aug-24	229.4	-0.7	20.4
Sep-24	235.8	2.8	21.5
Oct-24	237.8	0.9	22.1
Nov-24	243.9	2.6	23.0
Dec-24	248.3	1.8	23.8
Jan-25	252.6	1.7	23.5
Feb-25	255.9	1.3	23.1
Mar-25	256.5	0.2	22.4
Apr-25	258.6	0.8	21.2
May-25	260.5	0.7	18.4
Jun-25	257.3	-1.2	13.7
Jul-25	259.1	0.7	12.1
Aug-25	255.7	-1.3	11.5

Table 2: Yearly food and non-food August 2025

Year / Month	Food and non-alcoholic beverages	Non-food	Combined Food and non-food
Jan, 2024	27.1%	20.5%	23.5%
Feb, 2024	27.0%	20.0%	23.2%
Mar, 2024	29.6%	22.6%	25.8%
Apr, 2024	26.8%	23.5%	25.0%
May, 2024	22.6%	23.6%	23.1%
Jun, 2024	24.0%	21.6%	22.8%
Jul, 2024	21.5%	20.5%	20.9%
Aug, 2024	19.1%	21.5%	20.4%
Sep, 2024	22.1%	20.9%	21.5%
Oct, 2024	22.8%	21.5%	22.1%
Nov, 2024	25.9%	20.7%	23.0%
Dec, 2024	27.8%	20.3%	23.8%
Jan, 2025	28.3%	19.2%	23.5%
Feb, 2025	28.1%	18.8%	23.1%
Mar, 2025	26.5%	18.7%	22.4%
Apr, 2025	25.0%	17.9%	21.2%
May, 2025	22.8%	14.4%	18.4%
Jun, 2025	16.3%	11.4%	13.7%
Jul, 2025	15.1%	9.5%	12.1%
Aug, 2025	14.8%	8.7%	11.5%

Source: Ghana Statistical Service

Figure 3: Food and non-food inflation (%), August 2025

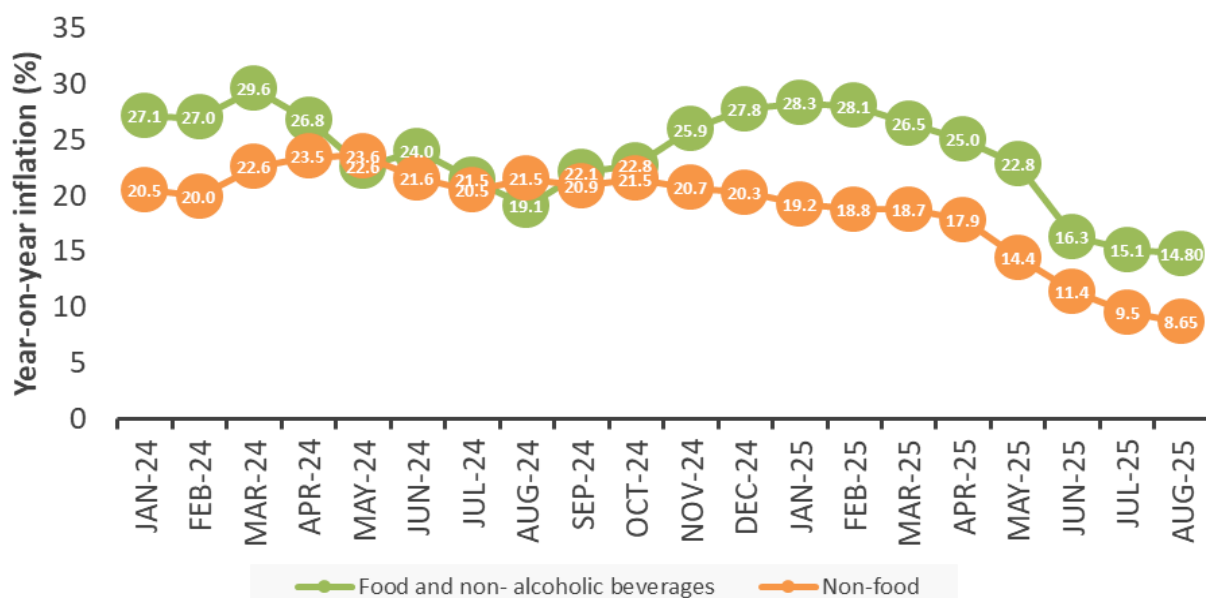
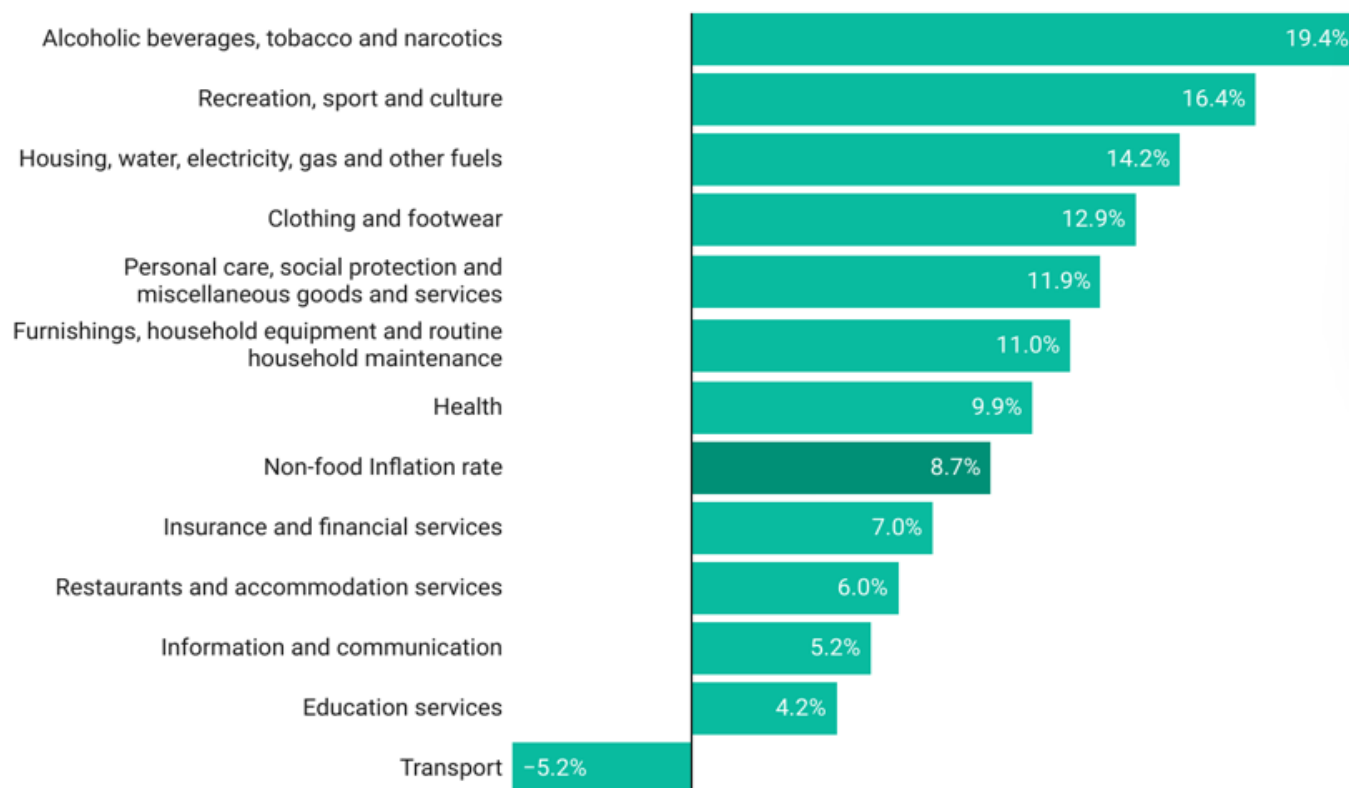


Table 3 : Consumer Price Index, August 2025

Item (COICOP Classification)	Weight	Index 2021=100	Change rate (%)	
			Monthly	Yearly
Non-food Inflation rate	57.4	232.9	-0.1	8.7
Alcoholic Beverages, Tobacco & Narcotics	3.9	270.9	-0.2	19.4
Clothing and footwear	8.0	228.6	-0.1	12.9
Housing, water, electricity, gas and other fuels	10.2	315.9	-1.8	14.2
Furnishings, household equipment and routine household maintenance	3.2	278.1	-0.1	11.0
Health	0.7	214.2	0.1	9.9
Transport	10.5	210.5	1.9	-5.2
Information and communication	3.6	165.4	-0.1	5.2
Recreation, sport and culture	3.5	244.9	-0.2	16.4
Education services	6.6	153.6	0.1	4.2
Restaurants and accommodation services	4.3	180.3	0.3	6.0
Insurance and financial services	0.4	142.1	-0.8	7.0
Personal care, social protection and miscellaneous goods and services	2.5	275.3	0.1	11.9

Figure 4: Year-on-year inflation by COICOP division, August 2025



Source: Ghana Statistical Service

Table 4: Year-on-year inflation by COICOP division, August 2024 to August 2025

Item (COICOP Classification)	Aug-24	Sep-24	Oct-24	Nov-24	Dec-24	Jan-25	Feb-25	Mar-25	Apr-25	May-25	Jun-25	Jul-25	Aug-25
Non-food Inflation rate	21.5%	20.9%	21.5%	20.4%	20.3%	19.2%	18.8%	18.7%	17.9%	14.4%	10.3%	9.5%	8.7%
Alcoholic Beverages, Tobacco & Narcotics	25.0%	27.6%	31.7%	30.0%	28.4%	27.2%	25.6%	23.8%	24.0%	22.4%	15.3%	18.3%	19.4%
Clothing and footwear	17.9%	19.0%	20.2%	20.1%	20.0%	19.8%	19.2%	19.3%	19.7%	19.3%	14.7%	14.8%	12.9%
Housing, water, electricity, gas and other fuels	31.8%	26.4%	27.6%	25.8%	26.3%	24.6%	24.3%	25.1%	22.5%	21.6%	18.5%	19.0%	14.2%
Furnishings, household equipment and routine household maintenance	12.6%	14.5%	16.8%	16.7%	16.7%	15.3%	15.4%	15.3%	15.1%	13.9%	8.5%	9.2%	11.0%
Health	20.6%	22.3%	23.9%	22.2%	21.4%	18.4%	16.6%	16.8%	15.0%	14.1%	10.0%	9.5%	9.9%
Transport	17.4%	16.3%	16.1%	16.5%	16.8%	16.9%	17.9%	16.8%	14.9%	3.1%	-2.1%	-7.7%	-5.2%
Information and communication	12.4%	14.2%	13.1%	11.9%	12.0%	11.6%	10.8%	10.8%	10.9%	9.7%	7.8%	7.3%	5.2%
Recreation, sport and culture	19.6%	18.7%	19.1%	17.9%	17.4%	17.4%	16.5%	20.7%	22.8%	22.5%	16.0%	18.3%	16.4%
Education services	22.0%	23.7%	21.7%	19.5%	19.1%	13.9%	12.3%	11.3%	11.7%	6.3%	4.8%	4.5%	4.2%
Restaurants and accommodation services	29.5%	27.9%	24.6%	18.4%	16.5%	16.5%	14.2%	13.3%	10.7%	10.4%	8.8%	8.0%	6.0%
Insurance and financial services	12.4%	13.3%	16.6%	16.5%	16.5%	15.4%	16.1%	16.6%	16.9%	16.9%	15.0%	8.8%	7.0%
Personal care, social protection and miscellaneous goods and services	14.9%	17.3%	19.7%	19.9%	19.3%	17.9%	17.1%	17.4%	17.2%	17.2%	12.3%	10.5%	11.9%

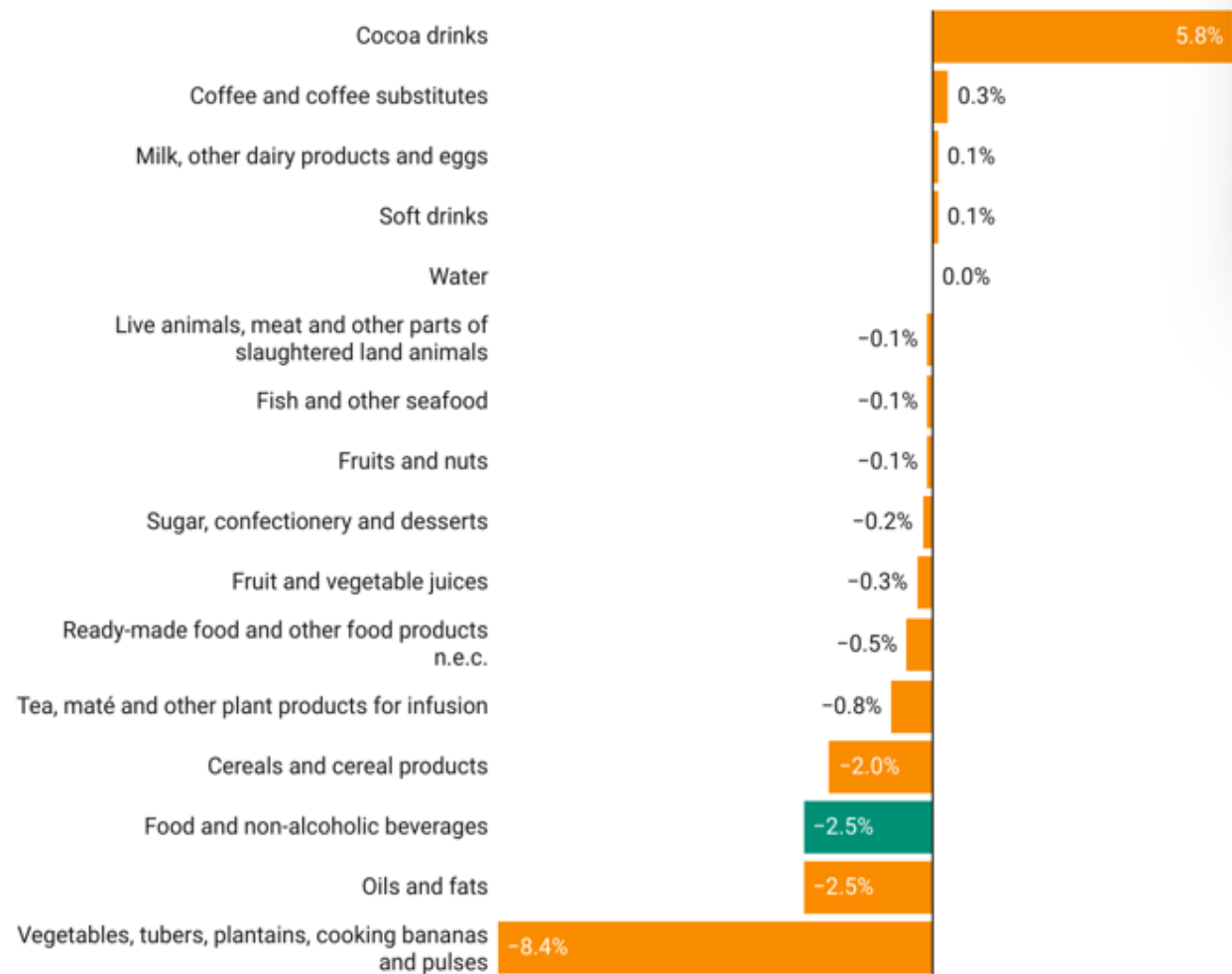
Source: Ghana Statistical Service

Table 5: Year-on-year inflation by sub-class, August 2024 to August 2025

Sub-class	Aug-24	Sep-24	Oct-24	Nov-24	Dec-24	Jan-25	Feb-25	Mar-25	Apr-25	May-25	Jun-25	Jul-25	Aug-25
Food and non-alcoholic beverages	19.1%	22.1%	22.8%	25.9%	27.8%	28.3%	28.1%	26.5%	25.0%	22.8%	11.9%	15.1%	14.8%
Cereals and cereal products	11.8%	17.9%	16.4%	22.6%	24.8%	25.4%	25.2%	26.1%	27.1%	26.6%	17.7%	15.9%	12.2%
Live animals, meat and other parts of slaughtered land animals	22.1%	24.5%	25.7%	25.3%	26.4%	28.9%	29.5%	28.9%	30.4%	29.5%	24.7%	23.5%	22.1%
Fish and other seafood	21.7%	17.9%	20.3%	24.5%	24.2%	25.2%	26.5%	22.1%	18.6%	20.7%	16.2%	15.8%	17.2%
Milk, other dairy products and eggs	-4.2%	8.6%	15.8%	16.7%	16.8%	18.3%	19.1%	20.3%	21.4%	22.2%	17.9%	16.0%	37.1%
Oils and fats	-1.8%	7.0%	16.0%	20.1%	22.9%	23.2%	26.6%	26.7%	33.8%	35.5%	36.1%	45.1%	53.5%
Fruits and nuts	-5.7%	6.1%	35.4%	37.9%	36.9%	43.6%	39.7%	41.6%	30.6%	20.4%	-1.0%	5.2%	49.0%
Vegetables, tubers, plantains, cooking bananas and pulses	37.5%	44.0%	38.9%	40.0%	46.1%	46.0%	45.5%	40.3%	34.3%	24.0%	13.0%	9.9%	4.8%
Sugar, confectionery and desserts	14.4%	17.3%	21.6%	22.2%	22.4%	21.5%	21.1%	20.8%	20.8%	20.5%	16.1%	15.7%	16.6%
Ready-made food and other food products n.e.c.	16.6%	16.4%	17.5%	21.3%	21.8%	21.0%	18.6%	18.8%	18.6%	18.1%	17.1%	16.1%	15.3%
Fruit and vegetable juices	25.0%	28.9%	31.1%	31.7%	32.7%	32.1%	31.5%	31.4%	30.6%	28.7%	24.3%	17.2%	17.0%
Coffee and coffee substitutes	16.5%	18.1%	21.5%	21.9%	22.5%	22.9%	20.0%	22.3%	22.4%	22.7%	21.4%	21.6%	20.7%
Tea, maté and other plant products for infusion	10.6%	10.1%	12.6%	11.4%	11.9%	8.3%	6.6%	6.3%	6.3%	5.6%	2.7%	3.3%	4.9%
Cocoa drinks	4.5%	6.2%	13.1%	13.7%	17.4%	20.4%	20.3%	20.4%	17.3%	16.0%	3.9%	8.6%	17.6%
Water	2.5%	2.8%	3.4%	3.7%	3.4%	3.8%	3.8%	4.0%	5.1%	5.2%	4.3%	4.2%	3.9%
Soft drinks	15.8%	16.2%	19.4%	22.2%	21.3%	20.1%	20.5%	21.2%	19.9%	20.5%	17.1%	15.2%	13.8%

Source: Ghana Statistical Service

Figure 5: Month-on-month inflation by sub-class, August 2025



Source: Ghana Statistical Service

Table 6: Consumer Price Index, August 2025

Region	Food and non-alcoholic Beverages	Non-food	Combined Food and non-food
Index (2021=100)			
Western	284.4	250.9	264.6
Central	295.8	225.6	258.2
Greater Accra	280.0	236.8	253.7
Volta	245.0	228.7	235.9
Eastern	356.7	241.4	296.3
Ashanti	262.1	218.7	238.3
Western North	302.8	235.8	271.2
Ahafo	239.0	221.0	231.2
Bono	313.5	231.9	264.0
Bono East	279.5	201.9	243.0
Oti	231.5	209.4	232.7
Northern	278.4	234.2	253.4
Savannah	312.1	250.1	278.9
North East	314.4	239.0	265.7
Upper East	242.6	292.4	276.5
Upper West	367.3	204.9	260.3
NATIONAL	285.9	232.9	255.7
Month-on-month inflation rate (%)			
Western	-1.3	4.3	-2.1
Central	-3.6	-3.9	-2.4
Greater Accra	-2.3	6.0	-0.9
Volta	-0.3	-4.4	-0.3
Eastern	-1.8	5.9	-0.7
Ashanti	-2.8	-3.5	-1.2
Western North	-3.8	-5.2	-2.1
Ahafo	-3.4	-9.5	-1.6
Bono	-0.6	-10.4	-0.6
Bono East	-4.9	-8.7	-3.2
Oti	0.0	-4.2	-0.8
Northern	-1.3	-2.9	-1.0
Savannah	-4.3	3.2	-2.0
North East	-4.2	1.8	-1.4
Upper East	-7.2	4.6	-3.2
Upper West	-4.7	-0.2	-2.0
NATIONAL	-2.5	-0.1	-1.3

Region	Food and non-alcoholic Beverages	Non-food	Combined Food and non-food
Year-on-year inflation rate (%)			
Western	20.4	9.1	13.8
Central	9.6	8.3	8.9
Greater Accra	14.3	4.6	8.5
Volta	15.8	11.8	13.6
Eastern	18.1	9.9	14.5
Ashanti	15.0	10.9	12.9
Western North	21.7	10.8	16.8
Ahafo	8.5	8.8	8.7
Bono	14.5	10.6	12.2
Bono East	7.2	4.8	6.1
Oti	16.1	9.7	10.4
Northern	15.7	9.9	12.6
Savannah	12.5	9.2	10.6
North East	21.1	11.5	15.1
Upper East	8.6	18.4	15.6
Upper West	19.9	24.5	21.8
NATIONAL	14.8	8.7	11.5

Table 7: Consumer Price Index, August 2025

	LOCALLY PRODUCED ITEMS			IMPORTED ITEMS		
WEIGHT	68.5			31.5		
PERIOD	CPI	YEAR-ON-YEAR INFLATION	MONTH-ON- MONTH INFLATION	CPI	YEAR-ON-YEAR INFLATION	MONTH-ON-MONTH INFLATION
Jan-22	107.5	13.7	2.2	106.2	11.1	1.0
Feb-22	110.8	16.3	3.1	109.7	13.8	3.3
Mar-22	115.5	20.3	4.2	114.3	17.7	4.2
Apr-22	121.9	25.3	5.5	122.8	25.6	7.5
May-22	129.4	32.1	6.2	128.3	30.3	4.4
Jun-22	133.7	33.9	3.3	132.1	33.3	3.0
Jul-22	136.6	34.2	2.1	136.5	36.3	3.3
Aug-22	137.8	34.9	0.9	138.1	36.5	1.2
Sep-22	139.4	35.8	1.2	143.4	40.7	3.8
Oct-22	143.0	38.4	2.6	147.6	43.3	2.9
Nov-22	154.8	48.8	8.2	161.7	55.2	9.6
Dec-22	159.8	51.9	3.2	170.1	61.8	5.2
Jan-23	162.7	51.3	1.8	172.6	62.4	1.5
Feb-23	165.0	48.9	1.4	177.5	61.7	2.8
Mar-23	163.8	41.9	-0.7	173.3	51.6	-2.4
Apr-23	168.4	38.2	2.8	175.8	43.1	1.4
May-23	176.2	36.2	4.6	184.6	43.9	5.0
Jun-23	181.7	35.9	3.1	190.9	44.5	3.4
Jul-23	187.8	37.5	3.3	198.7	45.6	4.1
Aug-23	187.5	36.1	-0.2	198.0	43.4	-0.4
Sep-23	191.4	37.3	2.1	200.8	40.0	1.4
Oct-23	191.7	34.0	0.1	202.3	37.1	0.8
Nov-23	195.3	26.2	1.9	205.4	27.0	1.5
Dec-23	197.9	23.9	1.3	207.1	21.8	0.8
Jan-24	202.2	24.3	2.2	210.3	21.9	1.6
Feb-24	205.6	24.6	1.7	213.1	20.1	1.3
Mar-24	207.5	26.7	0.9	214.6	23.9	0.7
Apr-24	211.7	25.7	2.0	217.1	23.5	1.2
May-24	219.7	24.7	3.8	220.9	19.7	1.7
Jun-24	227.2	25.0	3.4	224.3	17.5	1.6
Jul-24	231.6	23.3	1.9	229.7	15.6	2.4
Aug-24	229.1	22.2	-1.1	230.0	16.2	0.1
Sep-24	236.1	23.4	3.1	235.0	17.1	2.2
Oct-24	239.0	24.7	1.2	235.1	16.2	0.0
Nov-24	244.9	25.4	2.5	241.6	17.6	2.8
Dec-24	250.0	26.4	2.1	244.3	18.0	1.1
Jan-25	254.3	25.7	1.7	248.6	18.2	1.8
Feb-25	257.2	25.1	1.2	252.7	18.5	1.6
Mar-25	257.4	24.1	0.1	254.4	18.5	0.7
Apr-25	259.8	22.7	1.0	255.5	17.7	0.4
May-25	261.8	19.2	0.8	257.1	16.4	0.6
Jun-25	259.0	14.0	-1.1	252.4	12.5	-1.8
Jul-25	261.4	12.9	0.9	252.6	10.0	0.1
Aug-25	257.0	12.2	-1.7	251.9	9.5	-0.3

Table 8: Consumer Price Index, August 2025

	GOODS			SERVICES		
WEIGHT	72.5			27.5		
PERIOD	CPI	YEAR-ON-YEAR INFLATION	MONTH-ON-MONTH INFLATION	CPI	YEAR-ON-YEAR INFLATION	MONTH-ON- MONTH INFLATION
Jan-22	112.8	12.8	1.2	109.3	9.3	1.0
Feb-22	115.6	14.5	2.4	111.1	10.4	1.7
Mar-22	119.8	17.6	3.7	114.0	12.8	2.6
Apr-22	125.0	21.7	4.4	117.4	15.4	2.9
May-22	130.2	25.8	4.1	121.2	18.9	3.3
Jun-22	134.4	28.3	3.3	124.1	20.7	2.4
Jul-22	138.1	30.0	2.8	125.8	20.8	1.4
Aug-22	141.1	31.6	2.1	127.0	21.0	0.9
Sep-22	145.7	34.7	3.3	128.7	21.7	1.4
Oct-22	150.7	38.1	3.4	130.6	22.4	1.4
Nov-22	163.3	48.1	8.4	136.3	27.2	4.4
Dec-22	168.9	51.5	3.4	138.6	28.1	1.7
Jan-23	172.9	53.2	2.4	140.5	28.6	1.4
Feb-23	177.4	53.5	2.6	141.9	27.7	1.0
Mar-23	176.4	47.2	-0.6	140.2	22.9	-1.2
Apr-23	181.3	45.0	2.8	142.6	21.5	1.7
May-23	191.1	46.8	5.4	147.9	22.0	3.7
Jun-23	198.4	47.6	3.8	152.4	22.9	3.1
Jul-23	205.8	49.0	3.7	157.4	25.1	3.2
Aug-23	205.4	45.6	-0.2	157.2	23.8	-0.1
Sep-23	207.0	42.1	0.8	159.0	23.5	1.1
Oct-23	207.0	37.4	0.0	160.1	22.6	0.7
Nov-23	210.4	28.8	1.6	163.1	19.7	1.9
Dec-23	213.1	26.2	1.3	165.5	19.4	1.5
Jan-24	217.6	25.9	2.1	169.8	20.8	2.6
Feb-24	220.6	24.4	1.4	171.8	21.0	1.2
Mar-24	222.2	26.0	0.7	172.8	23.2	0.6
Apr-24	225.9	24.6	1.6	174.4	22.3	0.9
May-24	230.5	20.6	2.0	177.0	19.7	1.5
Jun-24	238.6	20.2	3.5	177.7	16.6	0.4
Jul-24	241.4	17.3	1.2	181.8	15.5	2.3
Aug-24	237.4	15.6	-1.7	182.5	16.1	0.4
Sep-24	246.1	18.9	3.7	185.6	16.7	1.7
Oct-24	252.5	22.0	2.6	188.4	17.7	1.5
Nov-24	258.3	22.8	2.3	190.3	16.6	1.0
Dec-24	262.3	23.1	1.6	191.1	15.4	0.4
Jan-25	266.4	22.4	1.6	193.6	14.0	1.3
Feb-25	270.4	22.6	1.5	196.7	14.5	1.6
Mar-25	272.1	22.4	0.6	199.2	15.3	1.3
Apr-25	275.1	21.8	1.1	200.9	15.2	0.8
May-25	276.8	20.1	0.6	202.3	14.3	0.7
Jun-25	275.7	15.2	-1.2	208.7	9.3	-3.3
Jul-25	277.0	14.2	0.5	211.4	6.2	1.3
Aug-25	272.0	13.9	-1.6	212.0	5.4	0.3